

THE NORTH TEXAS EVENTING ASSOCIATION

# CROSS COUNTRY NEWS

VOLUME 2, ISSUE 2      SUMMER 2009

## FROM THE TRAILER OF THE PRESIDENT

Dear Members, Families, Riders, and Horse Enthusiasts:

Summer is here and the Texas heat is upon us. The theme of my last letter was sportsmanship, and the theme of this letter is this: *Participation*. It is no secret that the national economy is in crisis, that every industry is feeling the effects, and that our sport is not immune. The sport has been suffering from cancelled events, low entries, and overall lack of participation. However, for the future of our industry and the ability of the sport to continue and thrive, we all need to make a valiant effort to participate! Times may be tough and pennies may be tight, please make an effort to support our local clinics, schooling shows, and events. And, if you are unable to compete, please offer your volunteer efforts to these show organizers. If we all pull together to make these events successful, there is a greater chance they will be there for all of us when the economy begins to thrive again!

Over the past months since our last newsletter, NTEA has been involved in some exciting ventures including support of Greenwood Horse Trials, the Will Coleman Clinic and the Area V Young Riders Camp with guest instructor, Nick Larkin. If you have missed any of these opportunities, please check out our website at [www.nteventing.net](http://www.nteventing.net) for future clinics and shows!

If you (or someone you know) have not renewed your membership, do so quickly so that you don't miss out on what NTEA has to offer this summer and fall. And, as always, please do not hesitate to contact me. Keep your prayers said and your ponies fed.

Meg Johnson, Esq.  
President, NTEA

### Important Notice

### POINTS

We have had about 2 months worth of Category II and Out of Area Point Forms submitted via fax that have not been received. We are working with our mail service center to try to understand the situation and correct it. We regret any difficulty that this causes our members and the Board has decided to take the drastic measure of only accepting forms via E-mail or Snail Mail for any future submissions.

Most Critically, **if you have submitted forms Anytime from January through May VIA FAX**, For Category 2 points please contact Tonya Ewalt at [bookworm711@msn.com](mailto:bookworm711@msn.com) to re-submit for Out of Area points, submit to [points@nteventing.org](mailto:points@nteventing.org).

**Deadlines for points accrued on or before 15 June have of course been extended to the 15th of September.**

## NTEA SUMMER-FALL 2009 CALENDAR

## August 2009

August 29-30      **USEA Horse Trials**—Feather Creek Farm. Norman, Oklahoma  
[www.feathercreekfarm.com](http://www.feathercreekfarm.com)

## September 2009

September 5-6      Open Schooling/Combined Test ***Lazy Dog Ranch***

September 12-13      Open Schooling & Ride A Test/Derby ***Denton Creek Farms***

September 19-20      Open Schooling/Horse Trial ***Curragh Equestrian Center***

September 25-27      **USEA Horse Trials**—Greenwood Farm, Weatherford Texas  
[www.greenwoodfarmonline.com](http://www.greenwoodfarmonline.com)

## October 2009

October 3-4      Open Schooling/Horse Trial ***Curragh Equestrian Center***

October 10-11      **USEA Horse Trials**— Meadowcreek Park, Kosse Texas  
[www.meadowcreekpark.net](http://www.meadowcreekpark.net)

October 17      Combined Test ***Flower Mound Equestrian Center***

October 24-25      **USEA Horse Trials**— Holly Hill, Benton LA

October 31      Brazos Valley Hunter Show

October 31– Nov 1      Horse Trials and Open Schooling—***Quail Run Farm***

Do you have an event you'd like to add to our calendar? Let us know!  
[mandyandkuma@gmail.com](mailto:mandyandkuma@gmail.com)  
 Check out our full, up-to-the-minute online calendar at [www.nteventing.net](http://www.nteventing.net)

# 'Round the Ranch



## with the Lazy Dog

by Cheryl Olivier

Summer is here! Hotter days and lots of sunshine means more time to spend with your four legged friends. It also means you both need to consume more water. So, I thought I would write a bit about how important it is to make sure the water quality you and your animals drink and swim in is safe.

Of course, most of us are familiar with the green slime algae that grows in our troughs. Mostly it is harmless as long as long as it is cleaned out regularly. The best way is to drain the trough, then let dry and scrub with a stiff brush. You can also use bleach or vinegar to really get it clean; just be sure to rinse it out thoroughly before letting your animals drink from it again. Placing your troughs in a place that does not receive direct sunlight will help tremendously. There are also a couple products you can buy that claim to help keep the algae down. One is a burlap bag that sits in the water, another is a plastic container with a replacable filter that just sits in the tank. Goldfish are also an option, but we found our horses just ate the fish!

There are some much more serious concerns when thinking about the quality of the water your animals are exposed to. There are several types

of bacteria that easily transferred to water sources that need to be watched for:

**Leptospira** – This is a bacteria that is excreted in rodent urine. It causes serious illness all mammals including humans. It is known to cause abortions, as well as death in both foals and adults.

**E Coli** – This dangerous bacteria is found in fecal contamination from many types of livestock. It can easily be transferred to water sources in rain runoff. It is also a bacteria that can cause death in humans and animals.

**Botulism Toxin** – This is a danger when an animal falls into water while trying to get a drink. The carcass then releases this bacteria into the water. Botulism is also deadly.

And of course, there are the diseases that are transferred by insects that thrive in water; including mosquitos. Serious diseases like West Nile. Keeping you water sources clean and fresh will go a long way in controlling these problems and keeping your human and animal family members safe!

Hopefully these ideas will help make your barn a happier place to be. Do you have any genius ideas you have used in your barn that you would like to share? Send them to us and we will include them in a future article!

[LazyDogRanchTx@yahoo.com](mailto:LazyDogRanchTx@yahoo.com)



## Rider Profile—Lynne Partridge

By Stacey Quarles

### The Rider

With 10 lovely acres adjacent to Jan Walling's Quail Run Farm, Lynne Partridge is no stranger to the many NTEA members who have competed and schooled there as she is often in the Show Jumping ring acting as judge. We also often see her leading the victory gallop, or arms laden with multiple rosettes and prizes at the yearend awards banquets. Mostly we see her with a smile offering a cheerful hello as she busies about the show grounds, or we cheer her in her pink and blue colors as she adeptly rides cross-country. Born in England, Lynne was raised on her aunt's pony farm, riding a variety of ponies and horses and honing her natural talent in the best way possible, as a child who bounces. Remaining in England into her teens and twenties, Lynne married her soul mate, Andrew whose work in the hospitality industry soon took them overseas to Hong Kong and Singapore. Fortunately those distant Asian lands were home to both avid racing fans and many English equestrian expatriates and Partridge was able to stick with the horses. Most of the equestrian opportunities were in the environs of the racetracks and retired thoroughbreds were the primary mounts available. One of Lynne's most treasured horses during that time was Magic Sky a lovely grey who Lynne rode in an amateurs ladies race one weekend and show jumped into the ribbons the following weekend.

Only in the height of the summer might the subtle fingers of the creeping dawn beat Lynne from her bed. An early riser, this mother of two and passionate rider is most often the earliest bird to the barn; and she needs to be to get her chores done, her horses ridden and her family and friends attended to. Her farm in the oak shaded Cross Timbers of Bartonville is home to her three horses, two dogs, three cats (2 in the barn and one in the house) and her family. In 2002 Lynne who had been living in Dallas and driving up to an hour each way to ride, found the heavily treed property with a newly built home on the market. The location was wonderful but the

property lacked a barn, pasture and arena.

Lynne boldly took the plunge and began developing the acreage to provide a home for her horses as well. It was no easy task but effort and expense in time gave rise to the 6 stall barn, a hay and storage shed, fenced paddocks and an arena large enough for jumping and flatwork. Moving into the barn were her daughter Rebecca's mount the talented Connemara-thoroughbred cross Cameron Creek and her own CCI \*\* horse, Mister C. As time has gone by, paddocks have grown green with seeding, fertilizing and watering but not without the management and work of Partridge. It has been said by her friends, that if one were to pass away, they would hope to be reincarnated as one of Lynne's horses. Her knowledge and experience combined with her deep compassion have led to the provision of wonderful care for her creatures both in their rest and in their work. Preferring to "produce" her horses herself, Lynne has brought many of her horses into competition from the un-backed staged onward. She incorporates work on the longe with progressive development of flat and jumping exercises to optimize the muscular development of her young mounts. One absolutely critical component of her program is the incorporation of

open



Lynne working in the arena with Quickstep.

hacking outside of the arena both for physical and mental development. Her time out of the arena is not wasted on a long lax rein, she continues to engage the mind and muscles of her horse as she presents them with gates to open, streams to cross and logs to step over. In addition to working on her own with her horses, Lynne trains regularly with both Mike Huber and Mary D'Arcy O'Connell, both of whom she credits with helping to bring her to her significant successes in and out of Area V.

The winter 2009 season was the first time Lynne has been able to be on the Florida and Georgia circuits. With her daughter's Lindsay and Rebecca now in law school and undergraduate school respectively and things running smoothly at the farm with a supportive husband encouraging the opportunity, she was able to pack up lock stock and barrel and be away for 6 weeks. While the younger generations fly in and out of Orlando to compete on horses they have sent along with the trainer, or stay on the training grounds take to the books and laptop correspondence courses after riding, Lynne has worked for and waited for the time when her children have been established as young adults and now may take the time to pursue her interests with more self focus. Recently entering her fifth decade, she looks forward to again competing at the Intermediate level and beyond. Her past and present well deserved successes are a testament to talent and her work ethic and we'll be proud to see her achieve her goals in Area V and beyond!

### **The Horses**

El Cid- You cannot miss this eye catching 17.2 hand chestnut Oldenburg gelding. He walks like an aristocratic dandy out to woo the ladies in Hyde Park wearing his polished patent leather shoes and a pair of spats. Sired by Hilltop Farms Contucci, Cid was bred by former NTEA member Kim Allen from her elegant chestnut mare Madrigal, at Pine Knoll Farm in Copper Canyon. Lynne bought Cid from Kim as a 2 year old and backed him herself, training him from the earliest stages to his wonderful successes in the Young Event Horse series. Now competing at the Preliminary level, Cid won his first CIC\* at Greenwood and will certainly be a talent to follow as his career proceeds.

First Mark- Yoda was first bought for and ridden by Lynne's daughter Rebecca who had multiple preliminary wins with this grey gelding with notable bloodlines. The

Olympic mare, Nirvana II, owned and ridden by Jill Henneberg is Yoda's dam. As the highest placed mare one year at the Rolex CCI\*\*\*, Nirvana secured for herself a breeding to the English Thoroughbred stallion Espiritu. Inheriting the fantastic jumping bravado of his dam and the stylish movement of his sire, he does retain a little of his dam's attitude about flatwork. Known for her swishing tail, Nirvana made clear to most judges that the dressage ring was not where she would performing. Yoda has a deep pool of brilliance that his dam was lacking on the flat, but he needs to be coddled a bit to show it. Deciding to focus on bringing El Cid's talent into the upper levels, after riding Yoda to the Intermediate level, Lynne decided to offer the Yoda's reins to Heather Morris and is excited to see their relationship unfurl.

Quickstep- Known as Q in the barn, this grey gelding is another talented warmblood who was purchased from clients of Sharon White who had imported him as a Novice horse. A tall, fluidly moving gentleman, he is bold and forward to the fences and expressive in the dressage. After some time off for a minor muscle strain while in Florida this year, he is very happy to be back in work and preparing for time on the road this summer.

**Do you have a great idea for a story, or would you like to recommend a rider or supporter for an article in an upcoming Cross Country?**

**Let us know!**

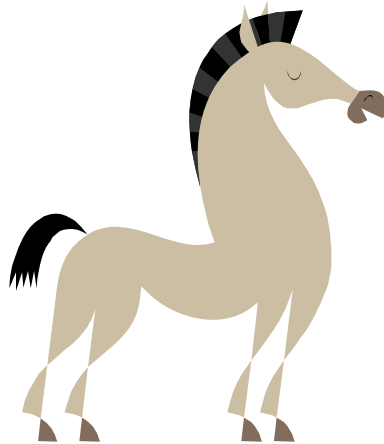
**Send an email with your idea to Mandy Kelly:**

**[mandyandkuma@gmail.com](mailto:mandyandkuma@gmail.com)**

## Equine Liability Common Misconceptions...and The Reality Behind Them

By: Meg Johnson, Esq.

Before cross country, we all suit up with helmets, gloves, tall boots and safety vests to protect ourselves in the event of a dreaded accident. However, it worries me that some of our beloved event facilities and coaches are "naked" as far as insurance coverage. As an eventer, I fear that we may see a decline in the number of quality trainers and facilities over the next decade because they are literally getting "sued out of business." In this three part series, I hope to shed some light on the reality behind the laws involving equine activities.



### PART 1:

#### Misconception

: My homeowners insurance will cover a claim if someone is injured on my property.

#### Reality:

Yes and no. For the horse enthusiast who only owns one or two personal horses, a homeowners policy may provide some coverage, but the protection is likely very limited. Most homeowners policies exclude "commercial equine activities." (Remember, a commercial activity includes, but is not limited to clinics, shows, riding lessons, and boarding). Many of these scenarios start out very innocently, for example, a teenager giving a riding lesson to a friend or child. However, this friendly situation can quickly take an ugly turn if the riding

student is injured and the property owner is relying on homeowner's insurance to cover the injury claim. A review of jury verdicts in Texas personal injury cases will quickly show that large verdicts are no longer an exception, but are becoming more and more common. Combined with the fact that America has become a wholly litigious society, all of the makings for a serious lawsuit fall into place. Without proper liability coverage you will have to pay damages (the amount awarded by the jury) and defense costs (legal fees and expenses) out of pocket. It is paramount to find an attorney who is knowledgeable in equine law and personal injury defense and the fees can vary depending on the attorney's expertise and location. This essential expense of attorneys fees could lead to serious financial hardship, but is preferable to proceeding with a complicated legal matter unrepresented by counsel. Your equine liability insurer has lined up the best equine attorneys in the state, ready to defend your claim, if necessary. Liability policies are designed to help protect you if you are

sued by an injured third party. The liability policy will cover defense costs and pay claims for which you are legally liable, up to the applicable policy limits. As stated in the American National Insurance Company brochure, "Reviewing your coverage costs nothing. Not reviewing it could cost you everything."

Our firm, Touchstone Bernays, handles the defense of farms and ranches, vehicular accidents involving equines, and defense of equine equipment failure as well as sales, breeding, training and boarding agreement preparation and litigation. [www.touchstonelaw.com](http://www.touchstonelaw.com)

*Next Issue:* The truth behind the Texas Equine Activity Liability Act.

## Get the Latest NTEA News! Watch your Email for updates!

Check your email in-box, as we'll be sending regular NTEA news blasts to make sure our members have the latest and greatest information at their fingertips. These emails will include new calendar items, upcoming events and other great news items you don't want to miss!

**NTEA on Facebook and Twitter! Check us out!**

**Facebook—join our Group at North Texas Eventing Association!**

**Follow us on Twitter @nteventing**

## Great NTEA News

Karen Shull and Heather Morris had a fantastic time training with Capt. Mark Phillips at Rebecca Farm in Kalispell, Montana as members of the Developing Riders list. They then represented Texas very well with ribbons in the CCI\*\*\* World Cup Qualifier for Karen and Just My Style in 6th place, 1st Place for Heather and First Mark (owned by Lynne Partridge) and 2nd for Heather and Slate River in the CIC\*\* (owned by Clear Creek Farm). Other Texas wayfarers were Weslee Wroe and C.C. Castillo who took home the 5th and 6th place ribbons in the Open Intermediate division. Congratulations ladies!

Questions or comments? Let us know!

Stacey Quarles—Secretary  
staceytquarles@gmail.com.

Mandy Kelly—Public Relations and Membership  
mandyandkuma@gmail.com

## NTEA CLASSIFIEDS

### SADDLES FOR SALE

**BLACK COUNTRY QUANTUM JUMPING SADDLE** for sale. Size 17.5 seat, regular flap, medium tree, front and rear blocks, color dark brown. Saddle is in next-to-new condition. Bought new in September, and lightly used through December. Very comfortable and puts the rider in a great position. Reason for selling is because I am no longer jumping. Paid \$2800 new. Asking \$2000 or best offer. Please e-mail Rachel for pictures or additional information at [rmzent@yahoo.com](mailto:rmzent@yahoo.com).

**COURBETTE CLASSIC JUMPING SADDLE** for sale. Size 17 seat, medium tree, black. Forward flap. Saddle has hardly been used! Great starter saddle or addition to your lesson saddles. \$400 or best offer. Contact Mandy for pictures or more information [mandyandkuma@gmail.com](mailto:mandyandkuma@gmail.com).

**If you have some tack, a trailer, or even a horse for sale/lease... put it in the NTEA Classifieds!**

**Listings are published online at [www.nteventing.net](http://www.nteventing.net) in addition to our quarterly newsletter.**

**Email Mandy Kelly if you'd like to place an ad.**

**[mandyandkuma@gmail.com](mailto:mandyandkuma@gmail.com)**

## Sports Medicine: The AquaTred, A New Wave of Technology

by Kristen Wertz and Melissa Neal

Here I go again talking about my silly gray gelding [respectively]. Kaboom, known as "Booms" these days instead of "Stupid Gray Gelding" as indicated in my last story, has continued to improve and move up the levels in the sport of Eventing. My biggest concerns in 2007 were waking Booms up in time to get to the dressage arena and having some horse power left on the last day at each Horse Trial. He has always had issues with laziness and willingness to move forward and he would much rather take a nap than jump around and run fast. Spring of 2008, however, I was plagued with the ever annoying judge's comments "horse down hill" and making time on the XC course.

Well, it just turns out that I'm not only an eventing enthusiast but also have a degree in Kinesiology/Biomechanics and hold a fantastic job at The University of Southwestern Medical Center where I play the role of 'mad scientist' 4 days a week. You would think with my background I could physically kick my full blooded thoroughbred around at 520mpm without issue. NOT!

Luckily, my job includes zero customer service which in turn provides much personal time to surf the internet, which I do 5 hours of each work day. (Shhhh. Don't tell HR.) As you all can guess, I wiggle into every equine site I can find. This is how I found out about the **AquaTred**. Yes my dear friends, for as little as twenty dollars a session I can



provide my horse with a full cardio vascular workout while I sit and watch sipping a cup of coffee and munching on a twinkie. Now that is some awesome technology! On a more serious note, Booms is a large warmblooded moving type of horse that needs twice the amount of interval training than your average thoroughbred. I hate drilling trot and gallop work and constantly worry about his joint health. The AquaTred is the perfect escape from the vigorous pounding of interval sessions.

In 2007 I was working very hard to make Training Level time (450-470mpm) on the cross country course; I always came in just under optimum time and Booms was quite fatigued upon crossing the finish line. I moved him up to Preliminary (fall 2007) and the speed increase resulted in time faults at both Prelim Horse Trials (Holly Hill and Pinehill). He was also very fatigued and recovered slowly in the Texas heat. I found an AquaTred, located in Cresson Texas (near Weatherford), and Booms started working out on the Tred each weekend in February 2008. After two months of AquaTred sessions he was one of the

fastest horses on course at both Prelim Horse Trials we competed in [2008] and his recovery time improved significantly. We were very pleased with his improvements as he was one of only two horses in the twenty two horse Open Preliminary division at Holly Hill (4/19/08) to finish under the optimum time. He finished in great condition and recovered quickly. This achievement moved him from 12<sup>th</sup> to 4<sup>th</sup> in the placings which is quite significant. I did very little trot work and only two gallop sets that spring. I feel as though by using the Tred I am providing my horse with a great service and adding many years his joint health.

The AquaTred not only aided in my horse's athletic achievements on the cross country course but also helped him physically in the dressage and show

jumping arenas. The added strength to his back and haunch allowed him to start working more 'up' in his frame and less on his forehead. He also started to hold a lighter more balanced frame when SJ rather than loping around in a strung out heavy manner. He also carries more impulsion on the flat and I do not have to wear spurs when schooling at home. That, ladies and gentleman, is the most amazing feat! I used to wear 'pig stickers' (1 3/8" spurs), and sometimes carry a whip in each hand to get him moving forward at home. Yes, I swear he is 100% thoroughbred blood.

Not only is the AquaTred a wonderful form of conditioning for our equine athletes, but it is first a foremost a rehab device. At some point every athlete will suffer a soft tissue or bone injury. The AquaTred is a very beneficial tool when rehabbing sport horses from these injuries or bringing a horse back into work after time off. **Even if your horse does not need extensive conditioning work it is a good idea to have your horse accustomed to the AquaTred so that if he ever needs the Tred for rehab purposes he already understands how walk in and out easily and confidently.** For reference, the average horse usually needs three sessions to before learning to walk down the ramp into the water confidently.

About the AquaTred:

AquaTred aids equine athletes recovering from surgery, injury and illness. The Tred also caters to horses that are in need of mental and physical rehabilitation as well as generalized reconditioning or relaxation.

One of the safest and most effective means to exercise a horse is in the water because it is a low impact, low stress form of exercise year round. Hydrotherapy relieves impact stress on joints and provides greater resistance. Water density is some 12 times greater than that of air. This combination makes hydrotherapy an excellent way to condition a sport horse for show or to recondition a horse after an injury or surgery and to improve fitness. AquaTred is beneficial for post surgical work (instead of hand walking) and as a reconditioning device for horses coming off lay-ups.

Benefits of Hydro Therapy:

- **Conditioning without joint insult from ground concussion**
- Preserving senior horses who continue to work
- Rehabilitation from injury
- Visual detection of Chiropractic issues while in the pool
- Mental refreshment for burned out track and show horses
- Extend breeding life of stallions through exercise
- Broodmares benefit greatly after weaning to aid in post-partum pains

Desensitization and exposure to new things for all disciplines

**I'd like to extend a special thanks to  
Melissa Neal and her loving staff at  
Cold River Equine: Sports Medicine and  
Rehabilitation.**

**Melissa Neal  
5901 Monroe Hwy  
Cresson, Texas 76035  
(817) 578-9604 ~ ColdRiverEquine.com  
Kaboomeventing.com**

# SPECIAL THANKS TO OUR NTEA BUSINESS MEMBERS



7950 Cross Timbers Rd.  
Flower Mound, TX 75022  
817-430-3182  
817-491-1714 (fax)

[www.fmec.us](http://www.fmec.us)  
Flower.Mound.Equest@gmail.com



14078 State Hwy 110N  
Tyler Texas 75704  
903-882-8696  
Fax: 903-881-0228  
[www.texasrosehorsepark.com](http://www.texasrosehorsepark.com)  
[info@texasrosehorsepark.com](mailto:info@texasrosehorsepark.com)

Check us out on YouTube

Website: View Proofs and order online at:  
[www.terriehatcher.photorefect.com](http://www.terriehatcher.photorefect.com)

Terrie Hatcher



TERRIE HATCHER  
PHOTOGRAPHY & ARTWORK

15021 FM 920  
Poolville TX 76487

Phone: 817-781-3643  
email: [aprilshorse1@msn.com](mailto:aprilshorse1@msn.com)



Joni Vachon, D.C.

Animal/Human Chiropractor

1240 Greene Road  
Lancaster, Texas  
75146

505 944-6730  
[drjvachon@yahoo.com](mailto:drjvachon@yahoo.com)  
[www.performanceedgechiro.com](http://www.performanceedgechiro.com)

International experience with top  
performance horses

Kathy S. Hevrin, DDS



1788 Highway 157  
Suite 101  
Mansfield, Texas 76063  
Phone 817.477.4185 Fax 817.477.4197  
[www.kathydds.com](http://www.kathydds.com)



[www.octoberhill.com](http://www.octoberhill.com) 817-341-2012

## Curragh Equestrian Center

5595 Ben Day Murrin Rd  
Fort Worth, Texas 76126  
817 443 3777

[www.curragh.com](http://www.curragh.com)

# SPECIAL THANKS TO OUR NTEA BUSINESS MEMBERS



6337 E. Hwy 380  
Decatur, Texas 76234  
940.627.7043

Lori & Cullen Calame

email: dntcrkfrms@aol.com  
www.dentoncreekfarms.com

COMBINED TRAINING FACILITY



"Quality Training  
of Horse & Rider"



Lynda Lewis  
Instructor / Trainer

*Lyndon Acres*

ARIA Certified Instructor  
Dressage / Eventing

Lynda & Don Lewis, Owners  
1516 Sally Ann St.  
Burleson, TX 76028

Call for Appointment  
(817) 447-6161  
e-mail lb430@aol.com

www.lyndonacres.com

NEWTOWN FARM



OLDENBURG SPORTHORSES

1280 Old Plain Dealing Road  
Benton, LA 71006

318.965.9071  
www.newtownhorses.com



**FREEMAN**  
PONTIAC  
BUICK - GMC

501 West State Hwy. 114 • Grapevine, TX 76051  
Metro: (817) 410-5000 • Fax: (817) 329-5720

**STAR T RANCH LLC**

Training

Full Care Boarding

Riding Lessons

Kim Taylor: English



Jody Taylor: Western

Combined Training

Calf Roping, Eventing

817-637-4585 startranchtx.net 817-247-9257

**Sundays**  
*On the Farm*



Sundays Publishing, LLC

Stacey Quarles  
editorsundaysonthefarm@gmail.com  
214.934.7577

Patrick Peters  
patrickepeters@gmail.com  
214.215.7759

www.sundaysonthefarm.com



AMERICAN NATIONAL INSURANCE COMPANY

**Distinct Financial Solutions, Inc.**

Lynn Jones and Joel Hays, Agents

1421 N. Elm Street, Ste 100  
Denton, TX 76201  
dfs@distinctfinancialsolutions.com

Bus. 940-566-0377  
Toll Free 972-434-2677  
Fax 940-382-5977

# SPECIAL THANKS TO OUR NTEA BUSINESS MEMBERS



**Greenwood Farm, Inc.**  
**Christie Tull** Farm: 817.599.8159  
 P.O. Box 1615 Cell: 817.307.9307  
 Weatherford, Texas 76086  
 www.greenwoodfarmonline.com  
 eMail: greenwoodfarm@aol.com



**ROADRUNNER FARM**  
**Jan Michie**  
 10501 Fincher Road • Argyle, TX 76226 • 940.241.3089  
 www.roadrunnerfarm.com • jmichie@attglobal.net



**It's All About  
the Horse**  
 Cindy Murray  
 Owner  
 3115 West Parker Road, Suite 420  
 Plano, Texas 75023  
 972-964-6736 Fax: 972-964-6947  
 csmurray@itsallaboutthehorse.com  
 www.itsallaboutthehorse.com

**Lazy Dog Ranch**



www.LazyDogRanchTx.com  
 E-Mail: LazyDogRanchTx@yahoo.com

**Pete Pitzer** 817.832.8513  
**Cheryl Olivier** 817.296.8725



**Peggy Friauf**  
**PF Flyers**  
 3005 Willing Ave  
 Fort Worth, TX 76110

runjumpxc@aol.com or www.texaspfflyers.com

Home # 817-926-0842 Cell # 817-875-7411



**Shepherds Run**  
**Mary-Ruth Keough**  
 owner, manager, trainer

Training for Horse & Rider  
 Dressage, Jumping & Pleasure  
 Beginners Welcome  
 Custom Care Board, Daily Turnout  
 Covered, Lighted Arena

7727 Shady Oak Drive  
 Aubrey, TX 76227-8407  
 940-365-5854  
 940-367-3503 (cell)  
 srr@pwhome.com



LESSONS | TRAINING | SALES  
**new day farm**  
 MARE LENAGHEN PACK  
 barn 940.433.5990  
 cell 817.658.2739

"... where morning dawns and evening fades He calls forth songs of joy" Psalm 65:8

SPECIAL THANKS TO OUR  
NTEA BUSINESS MEMBERS

**USEA ICP Level 2  
Certified Instructor**



**Becky Roper**      [www.landmarkeventing.com](http://www.landmarkeventing.com)  
972-965-5791 (Mobile)      [beckyroper@verizon.net](mailto:beckyroper@verizon.net)



**Mike Huber**  
**Gold Chip  
Stables, Inc.**

1051 Porter Rd  
Bartonville, Texas 76228

Stable: 817.430.3811  
Fax: 817.430.0321  
Cell: 817.368.7178

[www.goldchipstables.com](http://www.goldchipstables.com)  
eMail: [mike@goldchipstables.com](mailto:mike@goldchipstables.com)



**Tre' and Janet Book**

573 North Bend Road  
Weatherford, Texas 76085  
[www.willowdraw.com](http://www.willowdraw.com)

---

# TOUCHSTONE BERNAYS

ATTORNEYS AT LAW

---

## EQUINE LAW

Margaret A. "Meg" Johnson  
Attorney

[meg.johnson@tbjbs.com](mailto:meg.johnson@tbjbs.com)

214-672-8278 phone

214-259-8778 fax



Schooling Days & Clinics

Quality Horse Care

Horses For Sale

Dr. & Mrs. Peter & Jan Walling

624 W. Jeter Rd.

Bartonville, TX 76226

940-240-1565

[www.quailrunfam.net](http://www.quailrunfam.net)

Email: [peterwalling@gmail.com](mailto:peterwalling@gmail.com)

# FEATHER CREEK

Dynah Korhummel  
1501 72nd Avenue  
Norman, Oklahoma 73026  
925-580-9841

<http://www.feathercreekfarm.com>





## THE NORTH TEXAS EVENTING ASSOCIATION

NTEA  
2201 Long Prairie, Suite 107-714  
Flower Mound, TX 75022

For enquiries about this newsletter:  
mandyandkuma@gmail.com

For membership enquiries:  
nteamembership@gmail.com

---

CHECK OUT OUR NEW WEBSITE!  
[WWW.NTEVENTING.NET](http://WWW.NTEVENTING.NET)

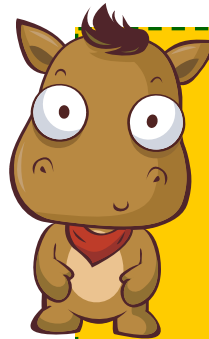
---

### The NTEA needs volunteers!

Have fun and help out at a local NTEA event.

Check the calendar and more upcoming events at [www.nteventing.net](http://www.nteventing.net) for ways that YOU can make an impact on the sport of eventing in North Texas!

Have a safe and successful 2009 season!



Attention all Members!  
Get involved with NTEA!

Next NTEA Board Meeting  
**Wednesday, August 26 at  
6:30pm—Red Robin in  
Grapevine.**



[www.legacytack.com](http://www.legacytack.com)



[www.kaboomeventing.com](http://www.kaboomeventing.com)

## **\$5 Off Any Purchase of \$50 or More!**

Free Priority Mail shipping on all orders over \$75!

One per customer. May be redeemed in store, online at [www.legacytack.com](http://www.legacytack.com), or over the phone by calling (800) 450-1559. To use online enter coupon code KABOOM at checkout.

For directions and to RSVP please contact Mandy Kelly at 214-563-2640 or [mandyandkuma@gmail.com](mailto:mandyandkuma@gmail.com).

All NTEA Members are welcome!